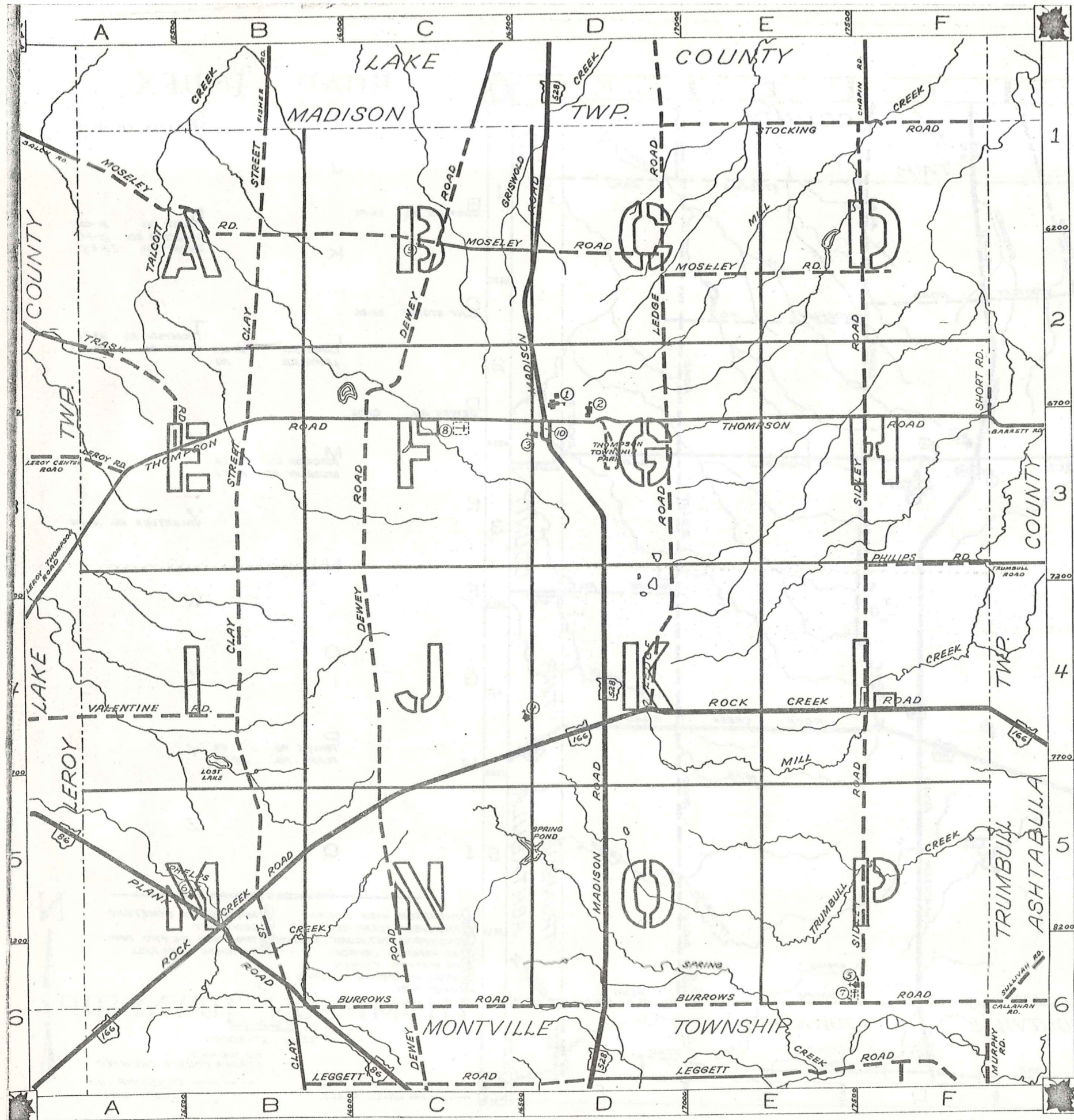


ROAD INDEX



A	I cont.	R	ROCK CREEK RD. A6-F1
	J		
B	BURROWS RD. B6-F6	S	SIDLEY RD. F1-F6 STOCKING RD. DI-F1 SHORT RD. F2-F3
	K		
C	CLAY STREET BI-B6	T	THOMPSON RD. A3-F3 TRASK RD. A2-A3
	L		
D	DEWEY RD. CI-C6	U	
	M		
E		V	VALENTINE RD. A4-B4
	N		
F		W	
	O		
G		X	
	P		
H	PHILIPS RD. F3 PLANK RD. A5-B6	Y	
	Q		
I		Z	

- ① THOMPSON HIGH SCHOOL
- ② THOMPSON ELEM. SCHOOL
- ③ THOMPSON METHODIST CHURCH
- ④ ST. PATRICKS CHURCH
- ⑤ ST. PATRICKS CHURCH
- ⑥ GRACE EVANGELICAL LUTHERAN CH.
- ⑦ CEMETERY
- ⑧ MAPLE GROVE CEMETERY
- ⑨ CEMETERY
- ⑩ THOMPSON VOL. FIRE DEPT.
- ⑪ THOMPSON TOWN HALL

THOMPSON TOWNSHIP

SCALE : 1" = 2000'

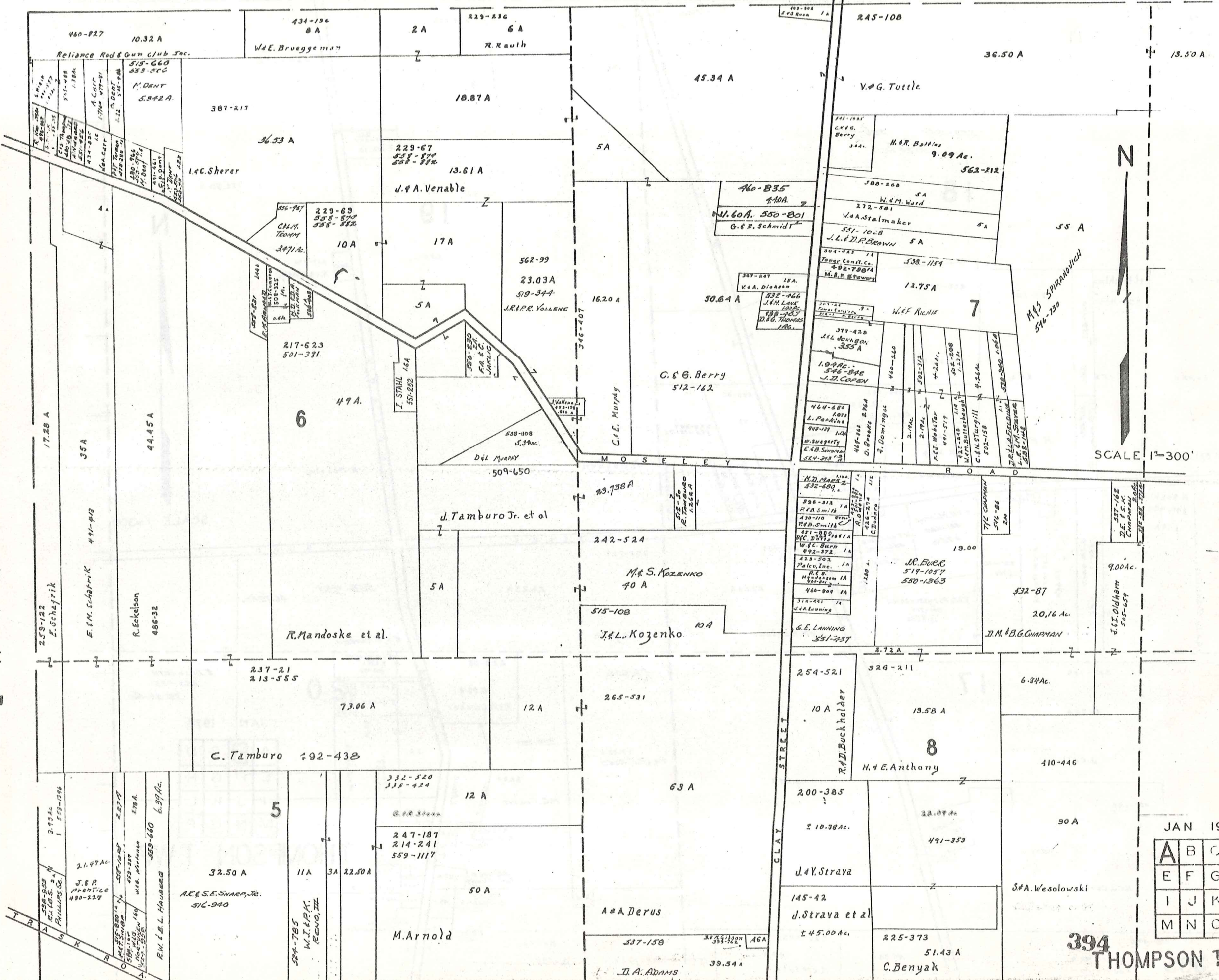
CLYDE POMEROY
GEAUGA COUNTY ENGINEER

--- UNPAVED ROADS
--- TOWNSHIP LINE
--- PAVED ROADS
--- COUNTY LINE

L A K E

C O U N T Y

L A K E C O U N T Y



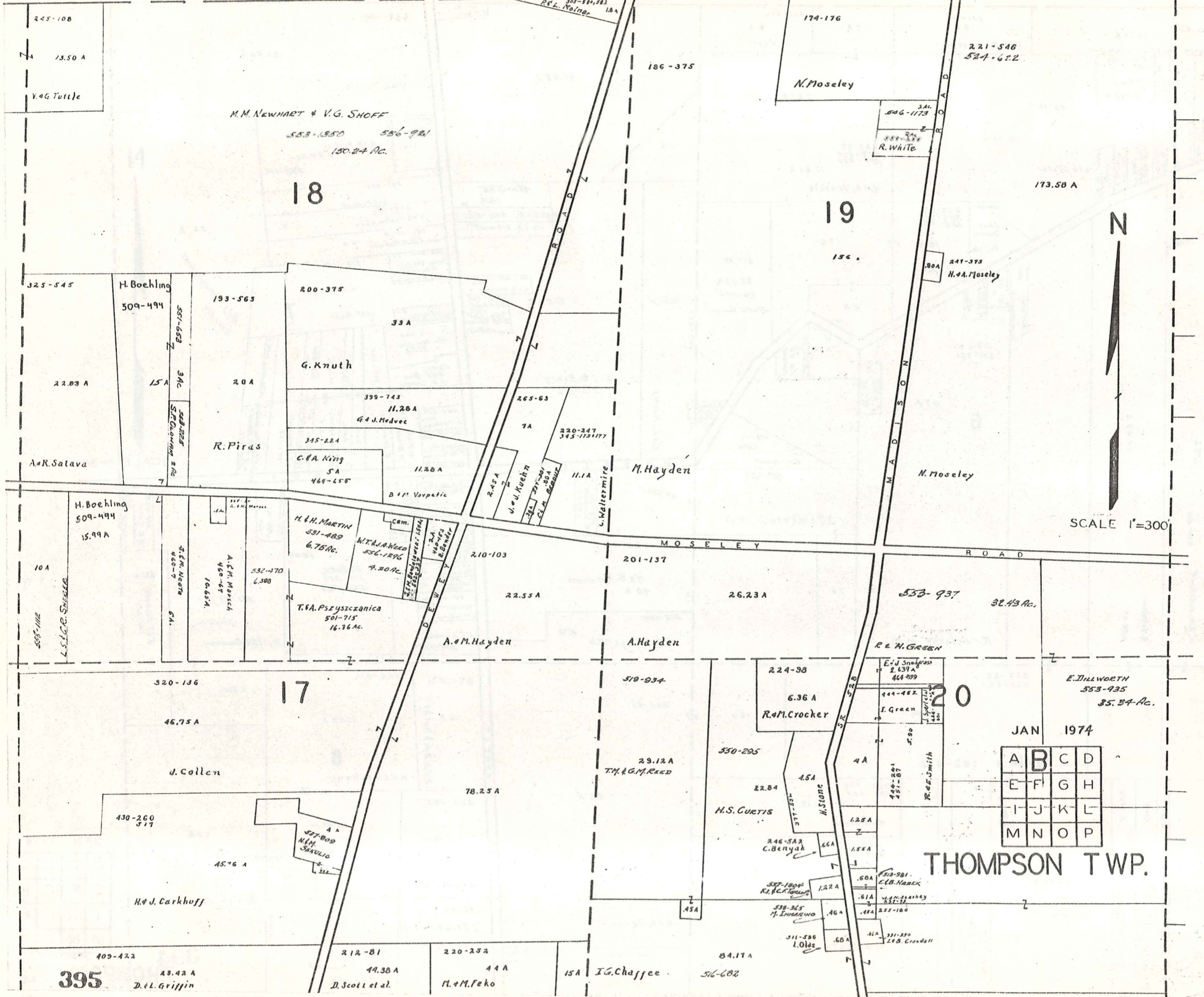
SCALE 1"=300'

JAN 1974

A	B	C	D
E	F	G	H
I	J	K	L
M	N	O	P

394 THOMPSON TW

L A K E C O U N T Y



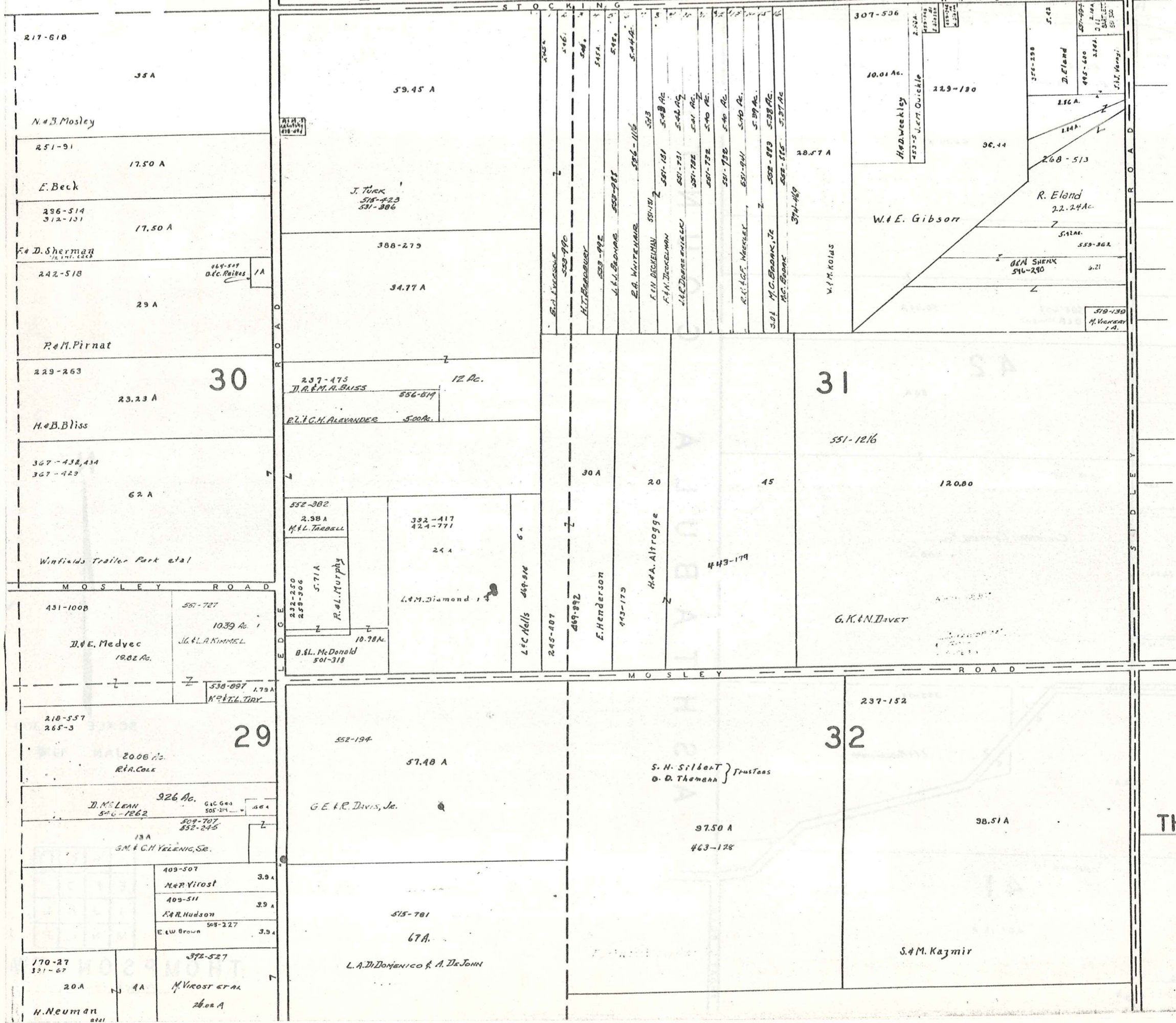
JAN 1974

A	B	C	D
E	F	G	H
I	J	K	L
M	N	O	P

THOMPSON TWP.

395

L A K E C O U N T Y



SCALE 1" = 300'
JAN 1977

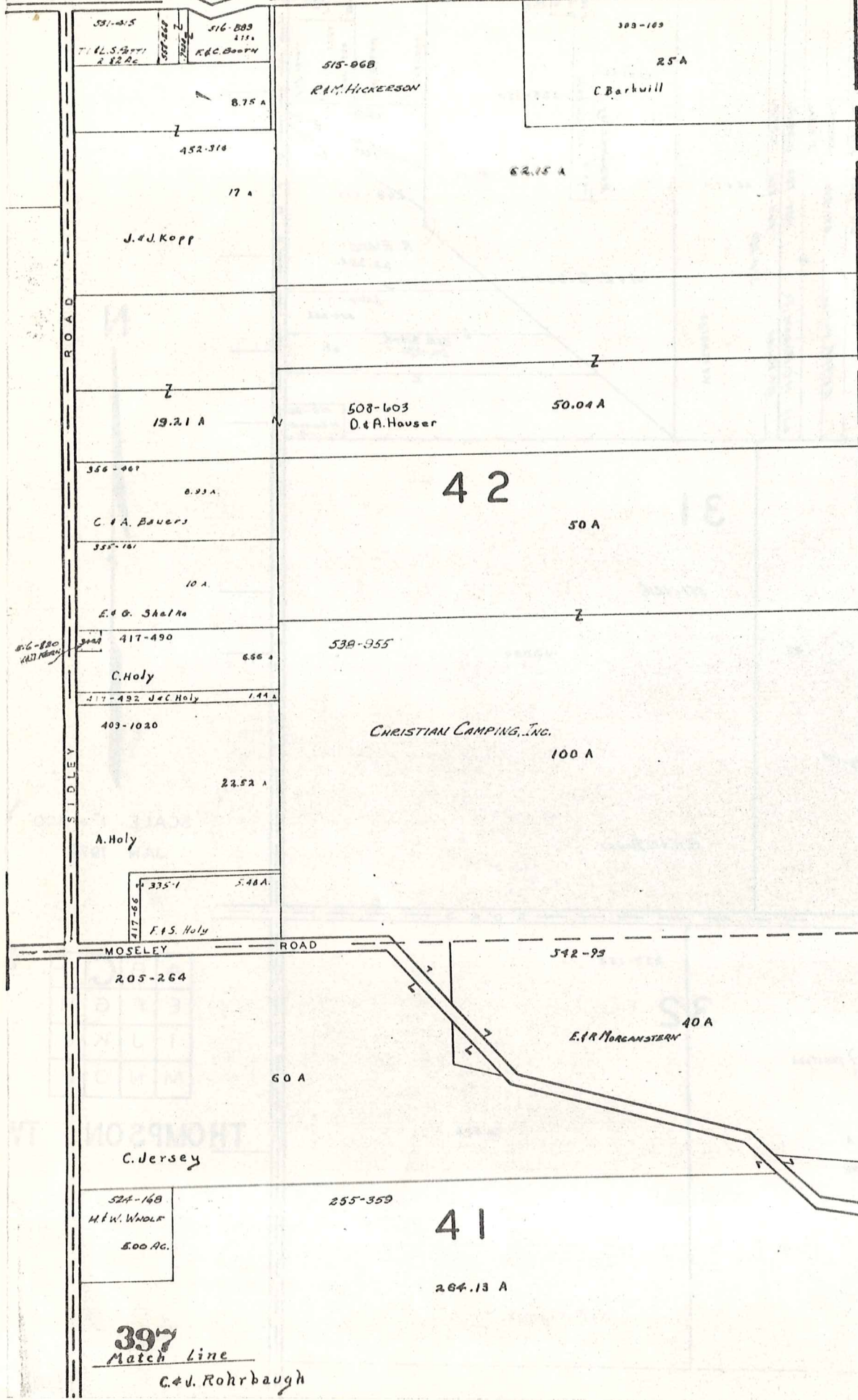
A	B	C	D
E	F	G	H
I	J	K	L
M	N	O	P

THOMPSON TM

L A K E C O U N T Y

STOCKING ROAD

A S H T A B U L L A C O U N T Y



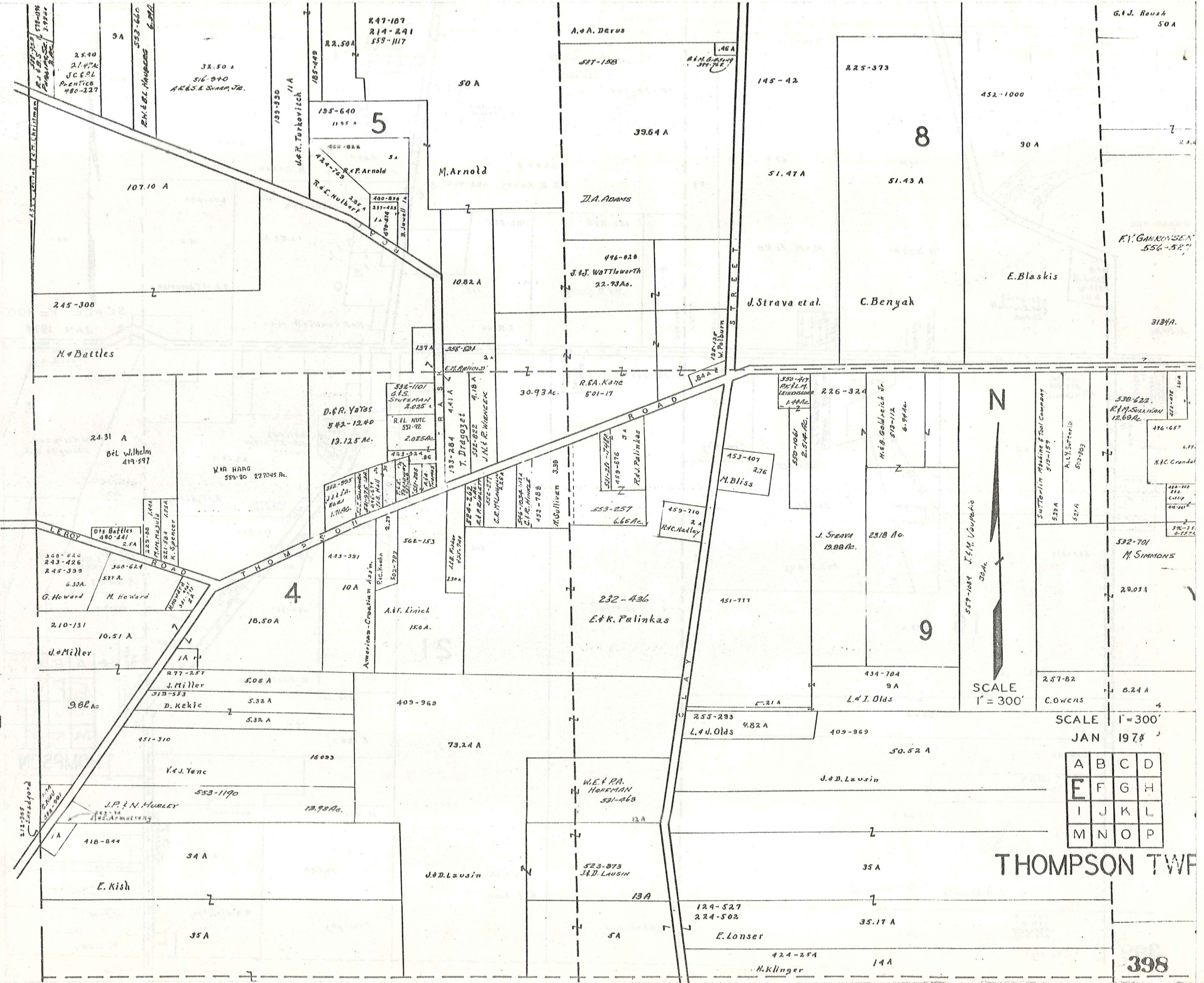
SCALE 1" = 300'
JAN 1974

A	B	C	D
E	F	G	H
I	J	K	L
M	N	O	P

THOMPSON TW
Match Line

397
Match Line
C. J. Rohrbaugh

L A K E C O U N T Y



SCALE 1" = 300'

SCALE 1" = 300'
JAN 1974

A	B	C	D
E	F	G	H
I	J	K	L
M	N	O	P

THOMPSON TWP

God. Roush

409-427
23.42 A
D. L. Griffin

17

220-252

174-371
45A

84.17A
516-602
I.G. Chaffee

20

J. Cufford & Co. Yorkville
464-987

M. J. Wilson
426-410
12.42 A

170-27

N

F. GABROVSEK
556-527

R. A. Crandall
477-911
3.11A

351-27-28
R. H. Crandall
22.06A

H. Scott

M. & M. Feko

29.84 A
T. & R. Keaty 492-900

217-533
5.36 A
E. Murphy

R. Green

203-632

21.53 A

272-290

16 A

Bd. of Education

SCALE 1" = 300'
JAN 1974

THOMPSON ROAD

453-400
R. Polubny

513-750
477-914
N. H. Crandall

R. F. Rauth
434-9
4.28

88-198
9A
Cemetery

193-387

L. E. Janc
367-557
1.68A

251-563
501-277 Sidco
501-537
13.58 A

388-623
H. J. Neuh

443-557
18
Bd. of Park Com.
Thomp Pk. Dist.

434-850
11M
E. G. Cutler
410-361

255-415

513-750
6.50A

33.76Ac
R. & K. Young

395-607

182-267
11.37A
A. Lathrop

400-673
2A
Sidco

R. E. Sidley

205-574
11A

501-277
Sidco
501-537

16

70.33 A

98.97Ac

21

F. M. Nikavcic

22.04

R. M. Sidley, Inc.

174-314

E. Town

THOMPSON
A B C D
E F G H
I J K L
M N O P

212-47

J. F. SEGULIN
551-239 60 A

110.02 A

R. Milkavcic

469-434

R. P. Sidley

33.50 A

31A

R. Sidley, Inc.

SULLIVAN ROAD

501-277 Sidco
501-537

233-110
199-8
520-1013
324-780

H. M. Kmetzko

50A

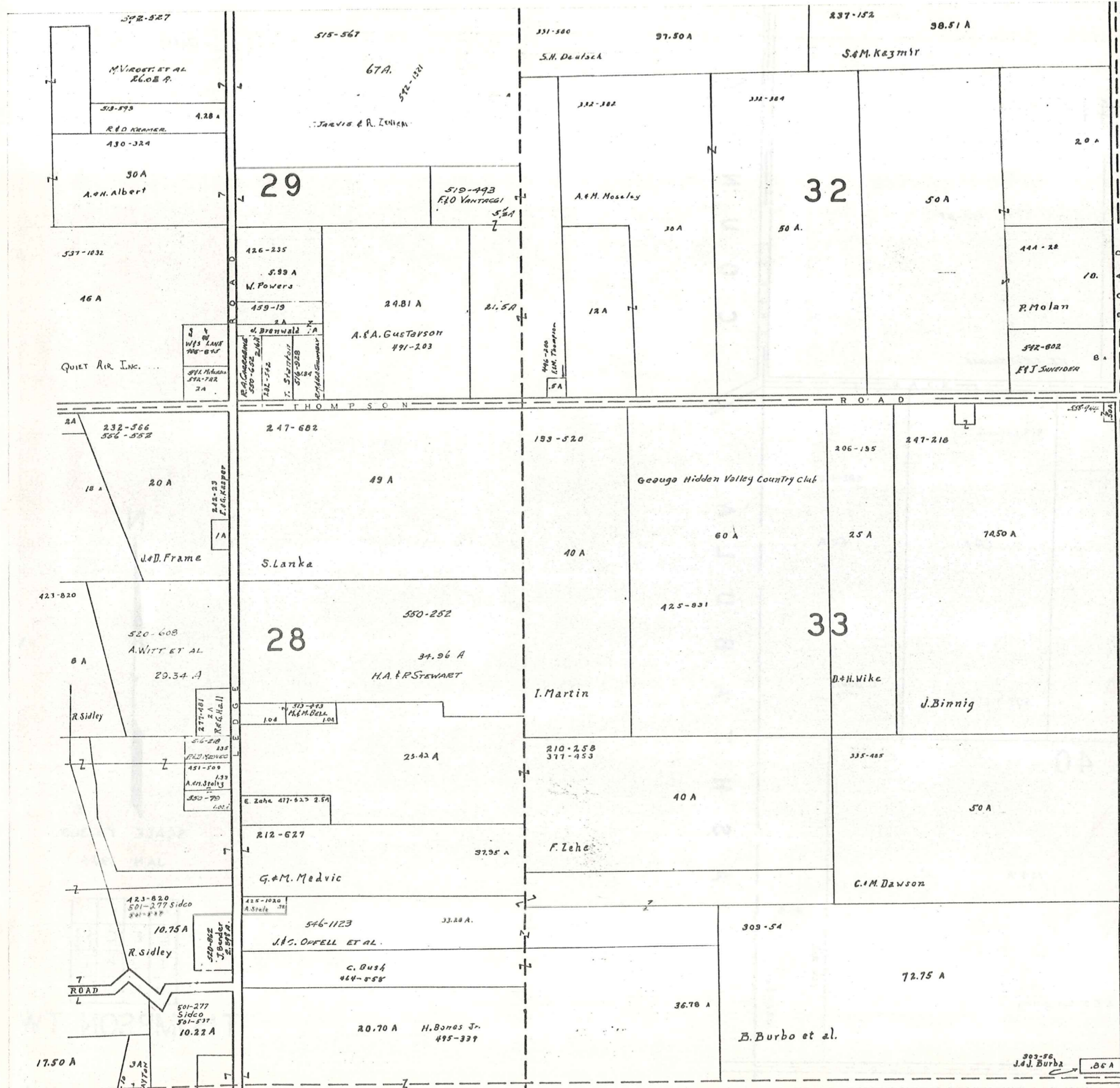
H. Andrews

F. Murphy

17.50 A

R. Sidley

399



SCALE 1" = 30'

JAN 1978

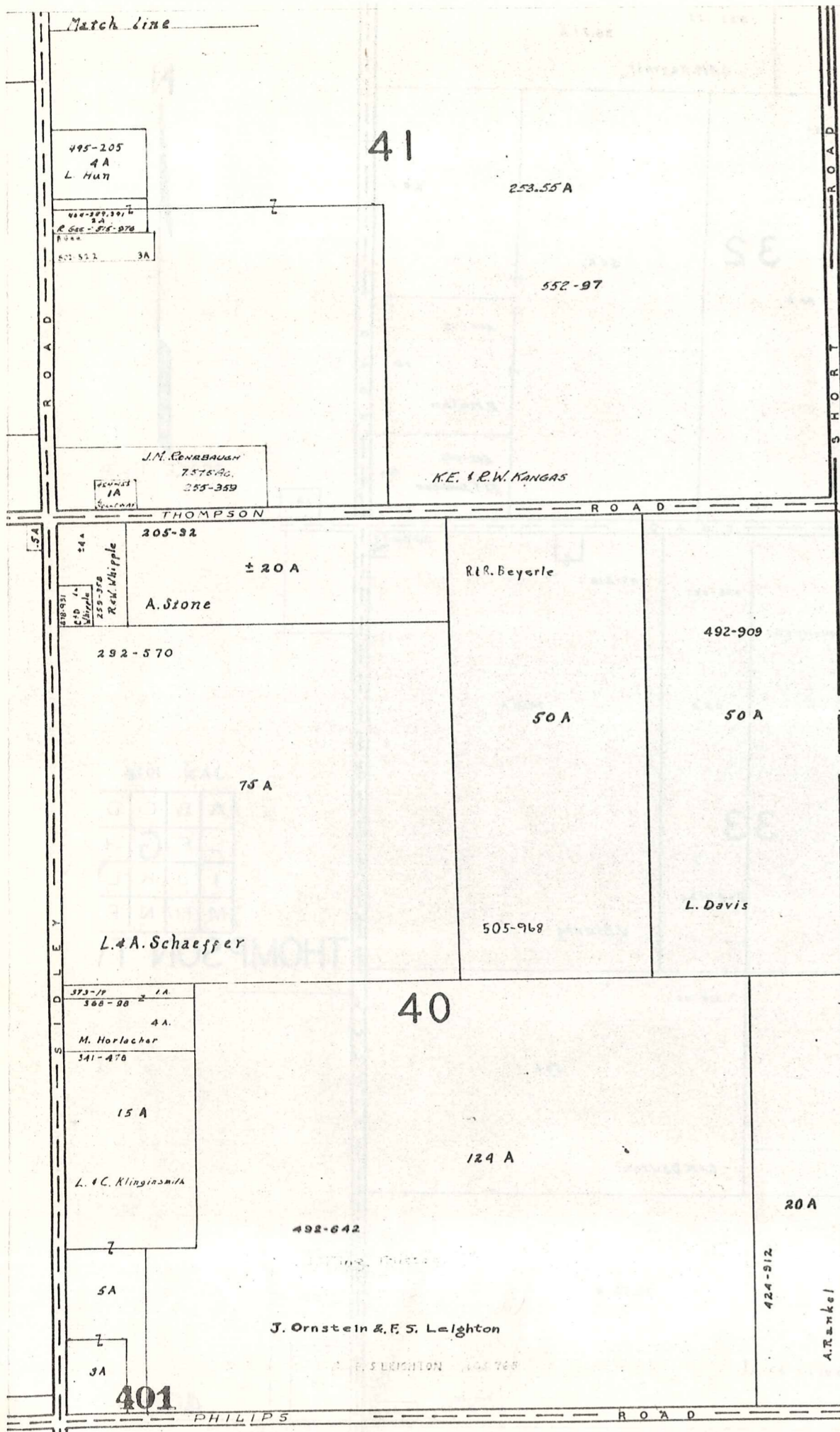
A	B	C	D
E	F	G	H
I	J	K	L
M	N	N	P

THOMPSON TOWN

400

Match Line

Match Line



A S H T A B U L A C O U N T Y

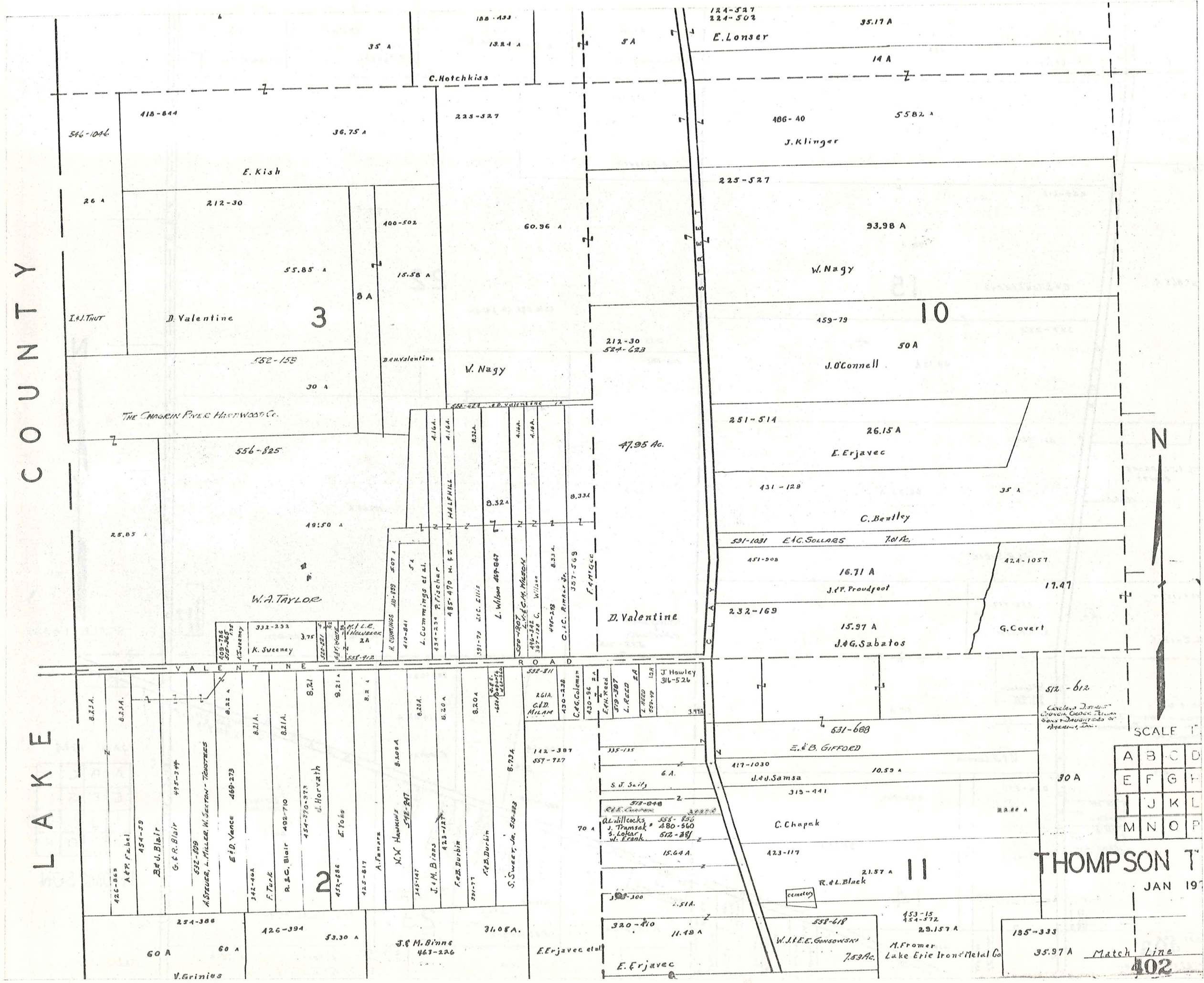


SCALE 1" = 300'
 JAN 1974

A	B	C	D
E	F	G	H
I	J	K	L
M	N	O	P

THOMPSON TW

L A K E C O U N T Y

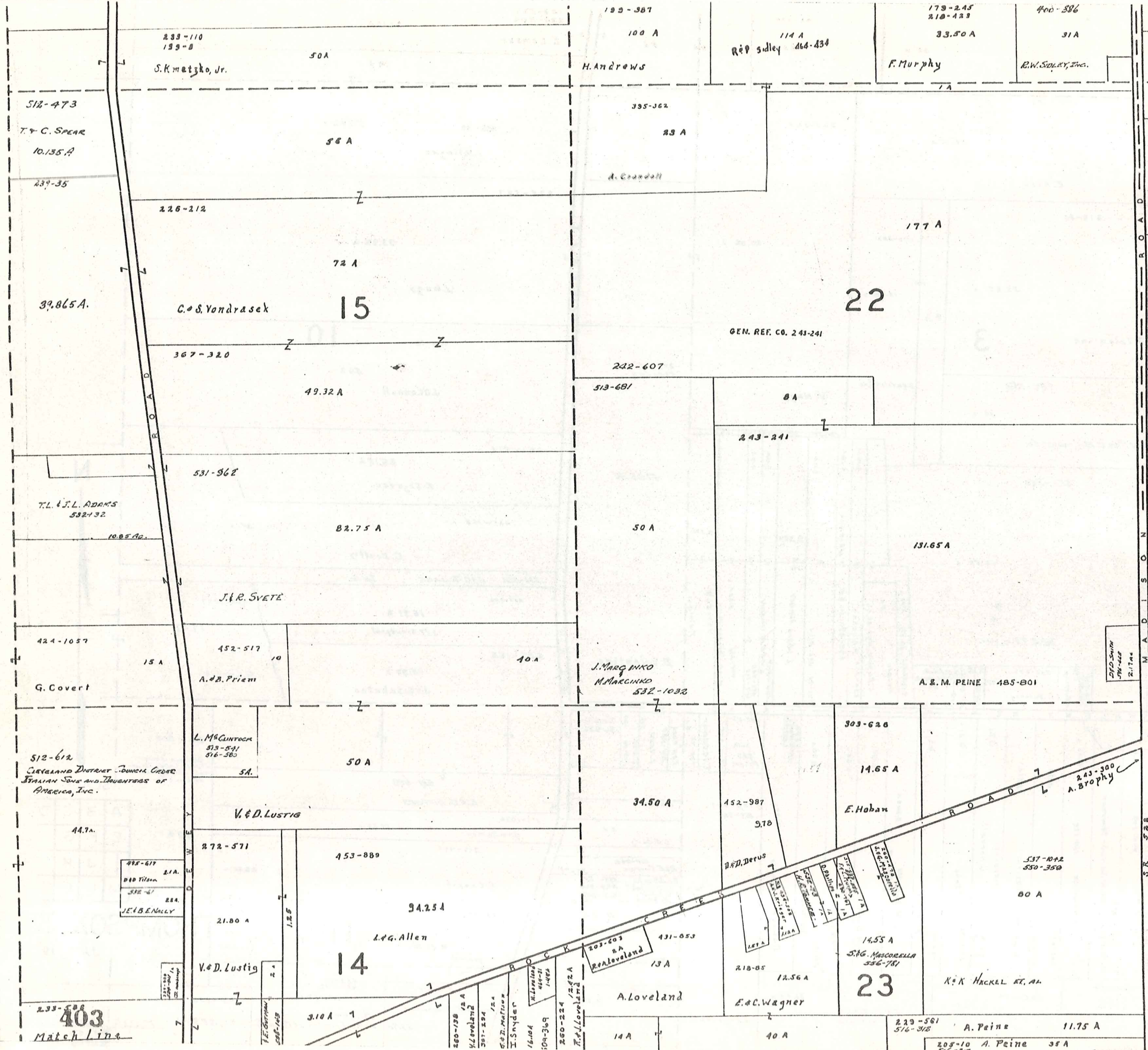


SCALE 1"

A	B	C	D
E	F	G	H
I	J	K	L
M	N	O	P

THOMPSON T

JAN 19



SCALE 1" = 300'

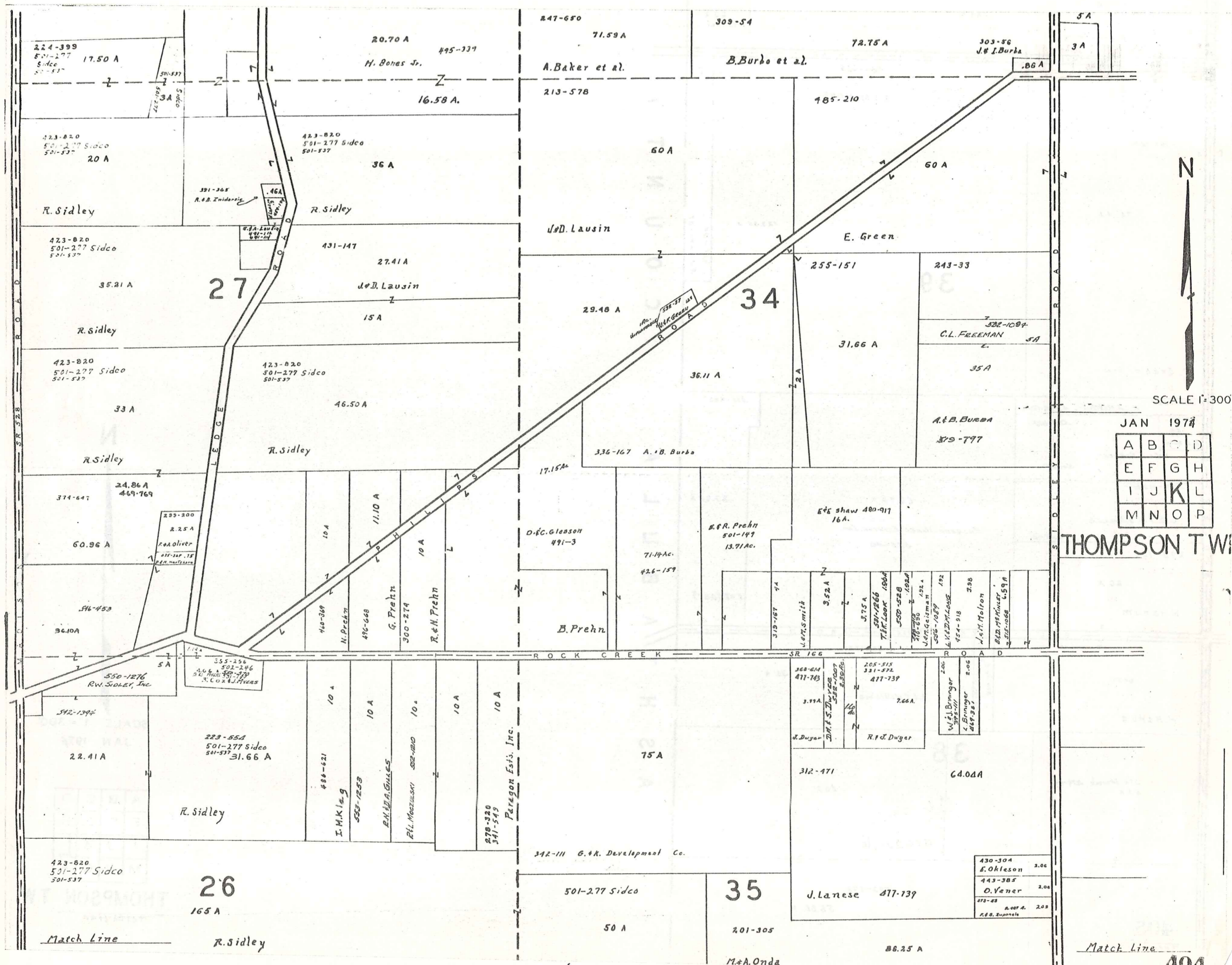
JAN 1974

A	B	C	D
E	F	G	H
I	J	K	L
M	N	O	P

THOMPSON

Match Line

403
Match Line



SCALE 1" = 300'

JAN 1974

A	B	C	D
E	F	G	H
I	J	K	L
M	N	O	P

THOMPSON TWP

224-399
501-277 Sidco
501-537
17.50 A

423-820
501-277 Sidco
501-537
20 A

423-820
501-277 Sidco
501-537
35.21 A

423-820
501-277 Sidco
501-537
33 A

374-647
24.86 A
469-769

36.10 A
SR 453

550-1276
R.W. SIDLEY, Inc.
542-1394

423-820
501-277 Sidco
501-537
165 A

26

165 A

R. Sidley

20.70 A
495-337
H. Bones Jr.

16.58 A

423-820
501-277 Sidco
501-537
36 A

431-147
27.41 A
J.D. Lausin

15 A

423-820
501-277 Sidco
501-537
46.50 A

374-647
24.86 A
469-769

10 A
11.10 A

10 A
10 A

10 A
10 A

10 A
10 A

10 A
10 A

10 A
10 A

10 A
10 A

10 A
10 A

10 A
10 A

10 A
10 A

10 A
10 A

247-650
71.59 A

A. Baker et al.

213-578

60 A

J.D. Lausin

29.48 A

336-167 A. & B. Burba

D.C. Gleason
491-3

B. Prehn

342-111 G.K. Development Co.

501-277 Sidco

50 A

309-54

B. Burba et al.

185-210

60 A

E. Green

34

36.11 A

E. & R. Prehn
501-149
13.91 Ac.

368-64
471-743

3.99 A

3.99 A

3.99 A

3.99 A

3.99 A

3.99 A

3.99 A

72.75 A

185-210

60 A

E. Green

255-151

31.66 A

E. & B. Burba
579-797

E. & R. Shaw 480-917
16 A.

319-167 74

3.52 A

3.75 A

3.75 A

3.75 A

3.75 A

3.75 A

3.75 A

3.75 A

3.75 A

303-56
J. & L. Burba
.86 A

185-210

60 A

243-33

C.L. FREEMAN
5A

35 A

E. & B. Burba
579-797

E. & R. Shaw 480-917
16 A.

319-167 74

3.52 A

3.75 A

3.75 A

3.75 A

3.75 A

3.75 A

3.75 A

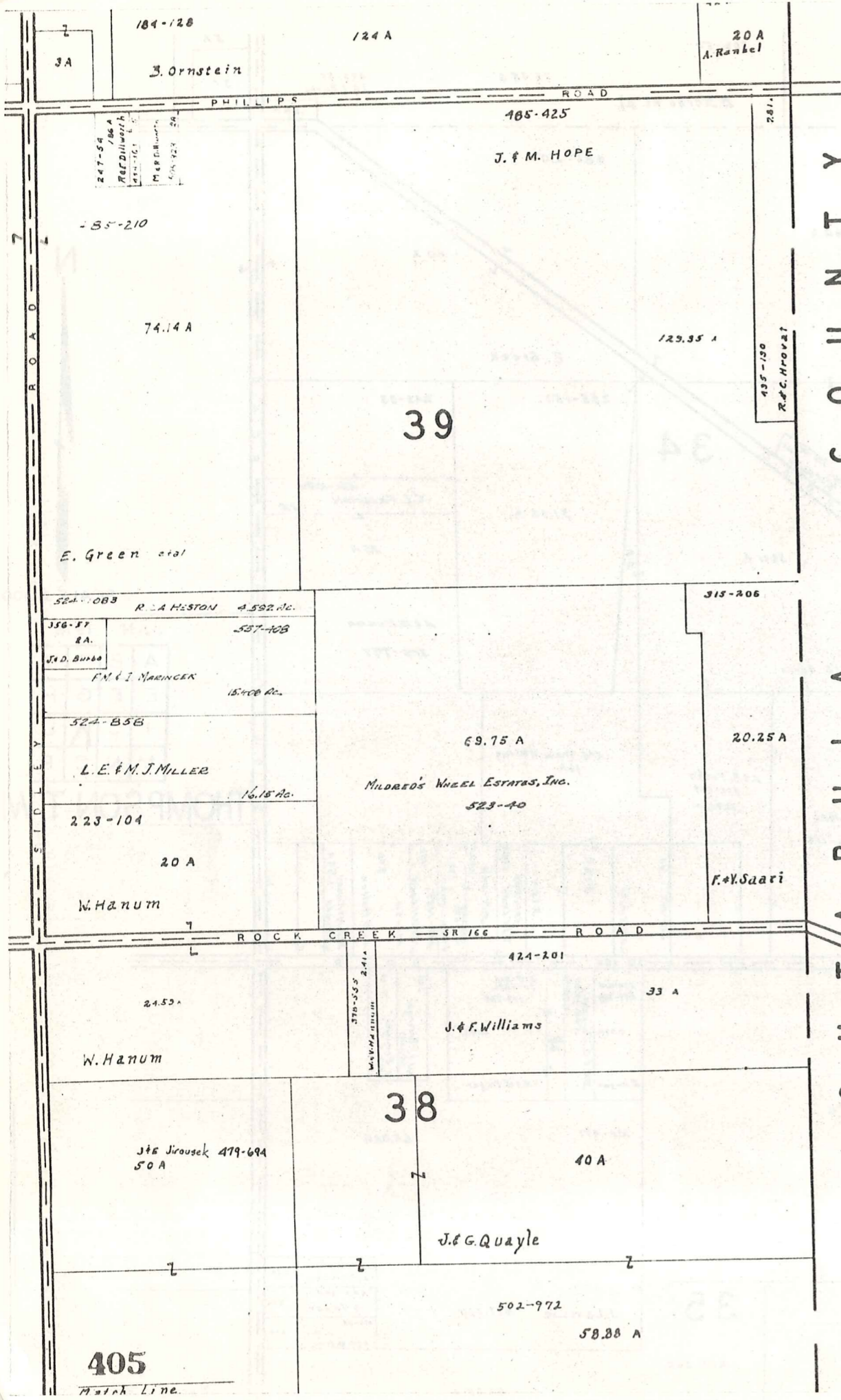
3.75 A

3.75 A

430-304	E. Okleson	2.06
443-385	O. Vener	2.06
473-43	A. Oet A.	2.05
788	Zuparela	

Match Line

Match Line



ASH T/A BULLA COUNTY



SCALE 1" = 300'
JAN 1974

A	B	C	D
E	F	G	H
I	J	K	L
M	N	O	P

THOMPSON TW
Match Line

405
Match Line

L A K E C O U N T Y

Match Line

Match Line

254-386

60 A

V. Grinius

2

54.27 A

S.E. 1/4 ANN. DOCKERY III

550-930

J. H. Binns
463-224

31.00 A

142-387

212-604

C. Grinius

37 A

320-410
E. Erjavec
16.00 A

551-1276

11 A

M. E. Aeko

559-927

70 A

E. Erjavec

145-103

20 A

30 A

B. Costanzi

153-15
454-572

195-333

35.97 A

23,157 A
M. Fromer
Lake Erie Iron
& Metal Co.

L. Hosta

208-183
233-87 263-264

W. Supniewski

188-69
233-300

16.36 A

M. Lustik et al.

303-94
351-371

35 A

Vitantonio
Inc.

CITIZENS SAVINGS & LOAN CO.
551-219

60.72 A

243-191
2.50 A

291-602

31.23 A

L. Lawrence

281-322
8.77 A
Evan. Lutheran
Church

199-120
5 A
R. M. Murrell

221-231

21 A

H. P. Lawrence

390-621 H. Fisher
10 A

4.32 A

15 A

220-427
23.79
J. A. Magyar

4.20
J. A. Lurig
558-47

12

221-117

21.40 A

F. Zivoder et al.

226-524
538-770
558-95

9.07 A

257-153
1.74 A
A. P. Wells

226-523

31.44 A

A. Nemeth

90.50 A

L. F. White

443-323
530-751

22.44 A

E. T. Anderson

SCALE 1" = 300'

A	B	C	D
E	F	G	H
I	J	K	L
M	N	O	P

THOMPSON TWP.

JAN 1974

97.68 A

A. P. Nemeth
&
E. J. NEMETH

224-113

17 A

d. Janu

453-559
443-247

P. E. Pudimat

12.30 A

299-35

J. B. Janu

18.63
L. M. Binns
581-134

WALTERS
C. Z. Walters

447 A

32.14 A

J. Corrigan

8.37 A

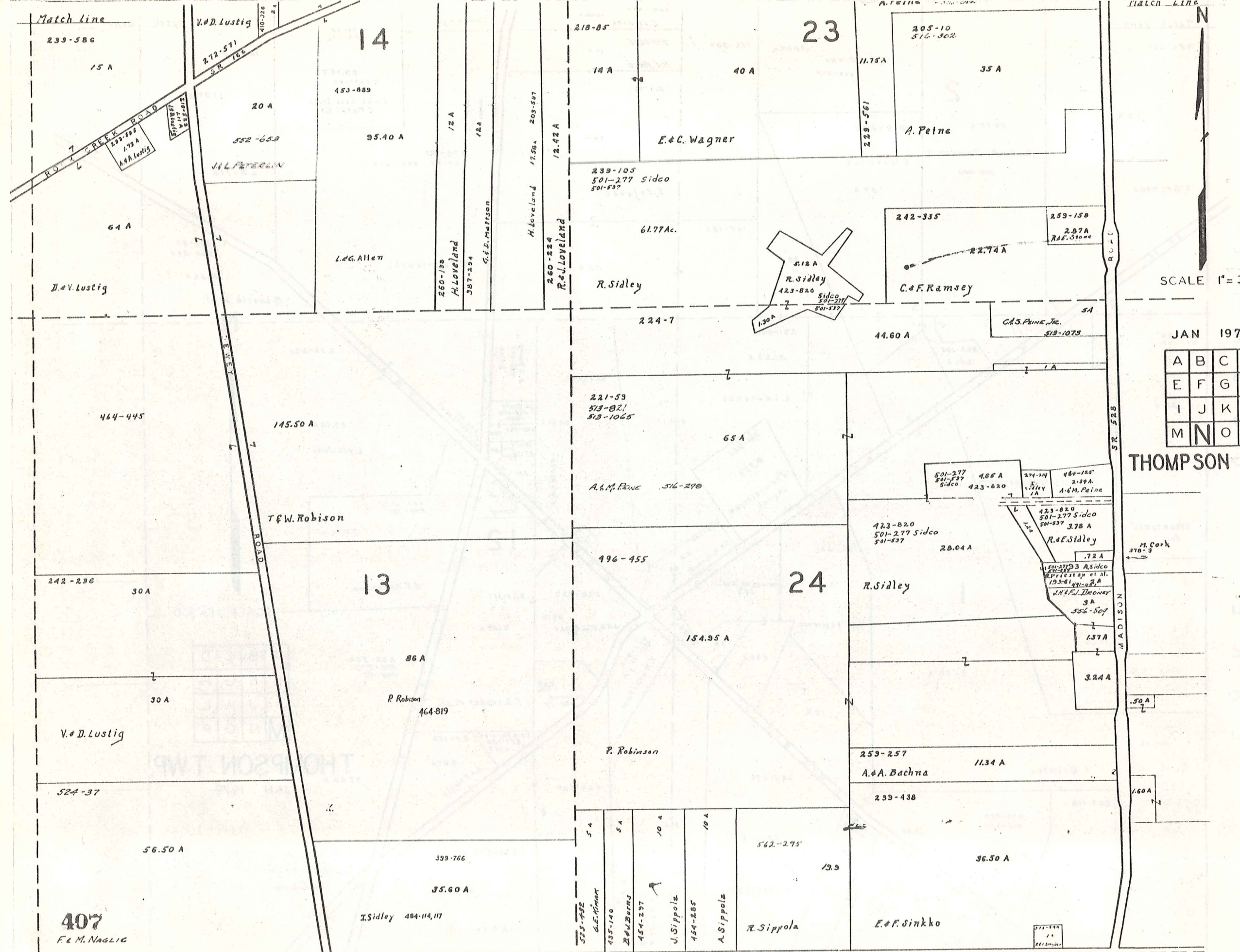
243-20
233-54
J. Corrigan

424-887

22.78 A

BURROWS ROAD

M O N T V I L L E T W P.



MATCH LINE



SCALE 1" = 30'

JAN 1974

A	B	C	D
E	F	G	H
I	J	K	L
M	N	O	P

THOMPSON TWP.

Match line

233-586

15 A

V.D. Lustig

272-571

S.R. 166

14

153-889

20 A

552-653

95.40 A

J.L. PARELIN

64 A

D.V. Lustig

12 A

12 A

260-138

H. Loveland

G.F. Matison

H. Loveland

17.98 A

209-597

12.42 A

260-224

R. Loveland

218-85

14 A

40 A

23

11.75 A

205-10

516-302

35 A

A. Peine

E.C. Wagner

233-105

501-277 Sidco

501-537

61.77 Ac.

R. Sidley

242-335

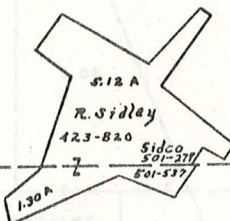
259-158

2.87 A

R.F. Stone

C.F. Ramsey

22.74 A



224-7

44.60 A

C.S. Peine, Jr.

5 A

513-1073

464-445

145.50 A

221-53

513-821

513-1065

65 A

A.M. Peine

516-298

501-277

501-537 Sidco

4.65 A

423-820

501-277 Sidco

501-537

28.04 A

R. Sidley

484-125

2.39 A

484-125

501-277 Sidco

501-537

3.78 A

R.F. Sidley

501-277 Sidco

501-537

3.72 A

501-277 Sidco

501-537

1.37 A

J.N.F.J. Dooney

3 A

556-807

1.37 A

3.24 A

M. Cork

378-3

242-236

30 A

T.F.W. Robison

13

496-455

24

154.95 A

R. Sidley

86 A

P. Robison

464-819

P. Robison

253-257

A.A. Bachna

11.34 A

V.D. Lustig

524-37

56.50 A

399-766

35.60 A

I. Sidley 484-114, 117

5 A

5 A

10 A

10 A

562-275

19.9

R. Sippola

F.F. Sinkko

572-244

2 A

R.F. Sinkko

407

F.M. Naglic

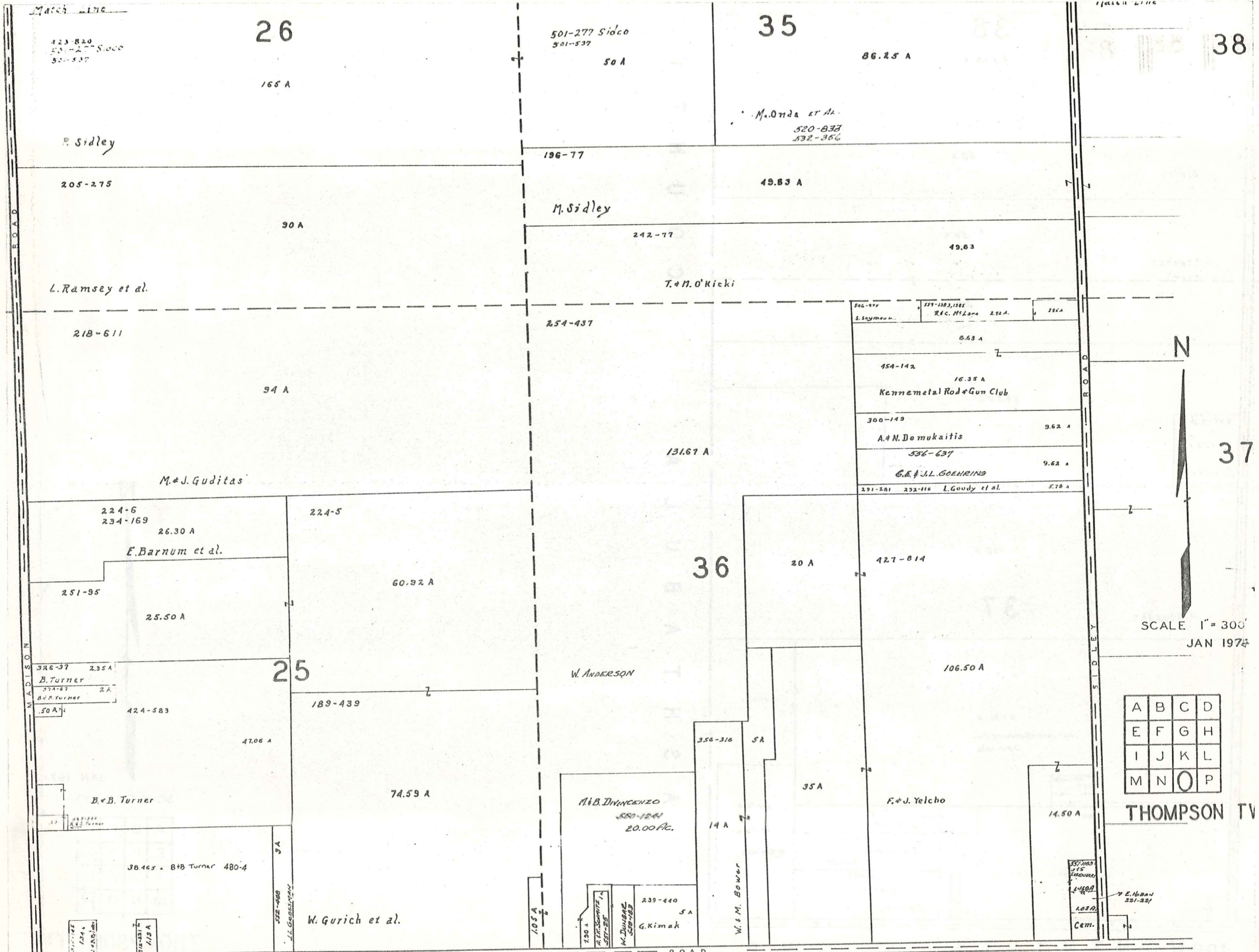
BURROWS ROAD

ROAD

SR 528

MADISON

MONTVILLE TWP.



WADSWORTH ROAD

SIDLEY ROAD

BURROWS ROAD

MONTVILLE TOWNSHIP



SCALE 1" = 300'
JAN 1975

A	B	C	D
E	F	G	H
I	J	K	L
M	N	O	P

THOMPSON TV

Town Line

Match Line

459-355

38

68.88 A

J. Stocker

7

196-77

50 A

M. Sidley

L

50 A

J. Stocker

Z

25 A

Z

69.25 A

257-418

5.75 A

J. Stocker

Z

110 A

J. Stocker

37

87.37 A

U.S. Auto Raceways, Inc.
537-1330

14.33 A

331-1183
G.S.
Eisenhart
229 Ac

491-654

5.96 Ac.

496-153

6.942 A

J. Brazofsky

513-628

492-232

15.59 A

M. Smialak

H.A. HOUSER 36.88 A.

425-955

9.125 A

J. Brazofsky

BURROWS ROAD

C O U N T Y
A S H T A B U L A



JAN 1972

SCALE 1" = 30'

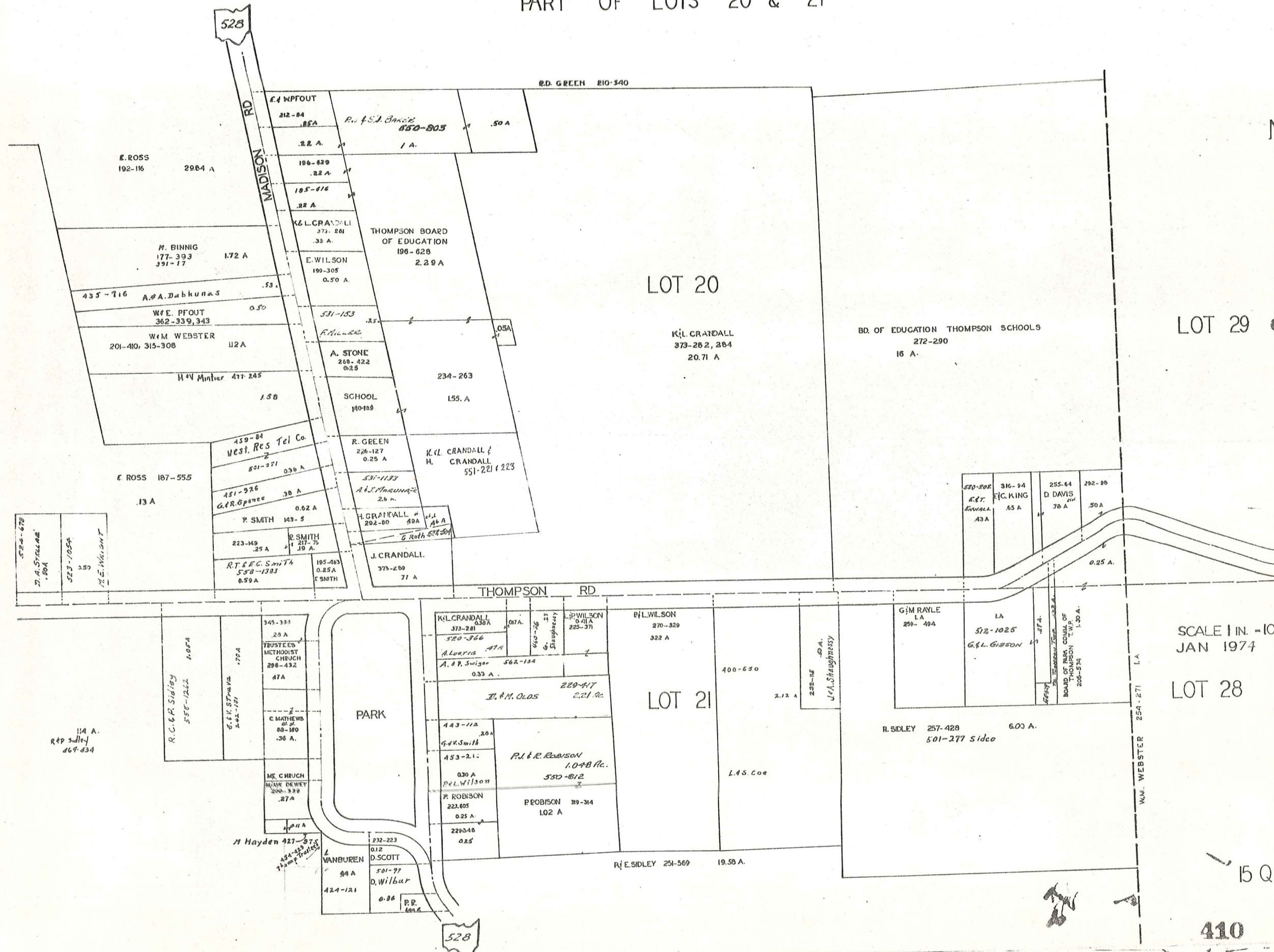
A	B	C	D
E	F	G	H
I	J	K	L
M	N	O	P

409 MONTVILLE TWP.

THOMPSON TV

THOMPSON TR

PART OF LOTS 20 & 21



SCALE 1 IN. = 100
JAN 1974

LOT 28

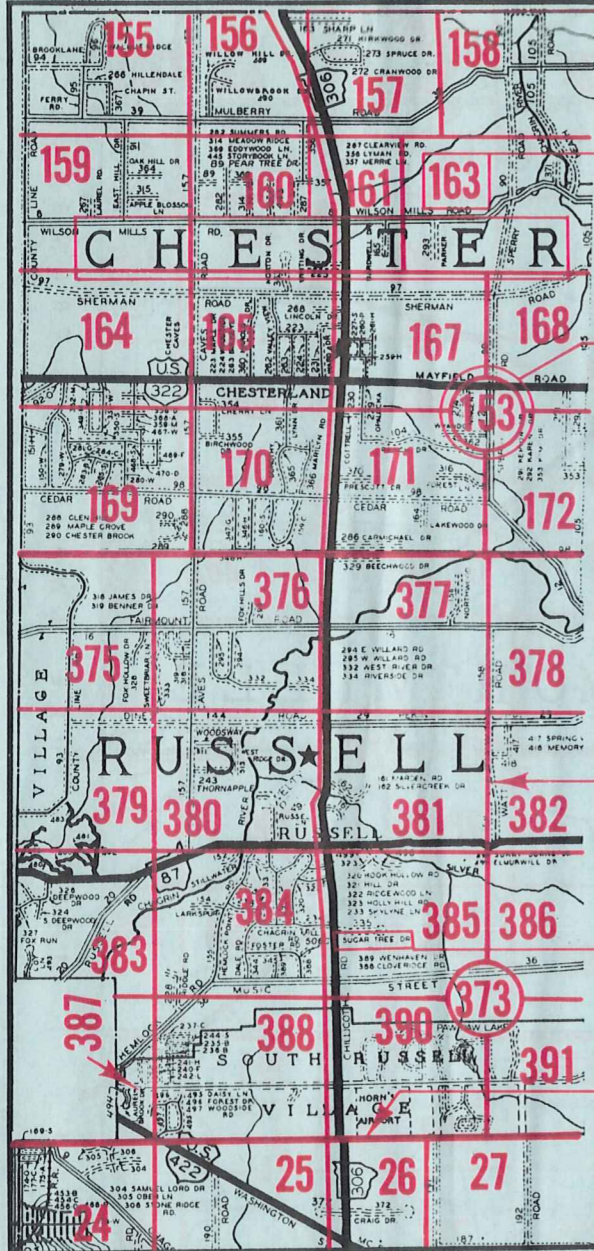
LOT 29

LOT 20

LOT 21

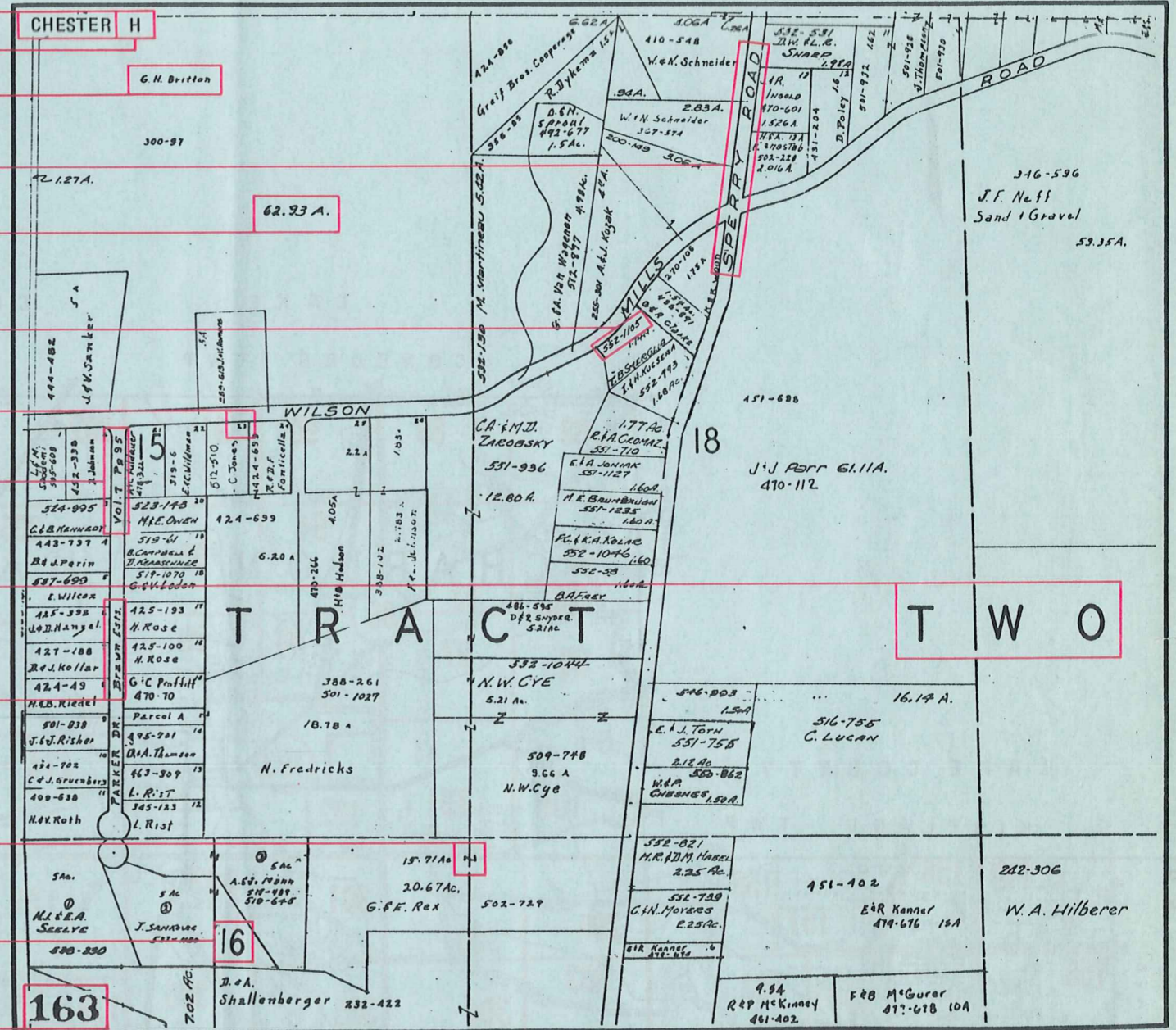
Explanation and Use Sheet for Geauga County, Ohio

SAMPLE (PARTIAL) COUNTY INDEX MAP



- Township Name
- Map Page Number (Or Letter)
- Owners Name
- Street Name
- Acreage
- Municipality Index Beginning Atlas Page Number
- Deed Book & Page
- Subdivision Lot Number
- Plat Book & Page
- Tract Number
- Atlas Page Boundary
- Subdivision Name
- Street Name
- Denotes Continuous Ownership
- Municipality Index Atlas Page Boundary
- Tract Lot Number
- Atlas Page Number

SAMPLE (PARTIAL) MAP PAGE



USE OF THE MAP VOLUME

1. LOCATE THE GENERAL AREA OF INTEREST ON THE COUNTY INDEX MAP, ATLAS PAGE 'B'.
2. **A. IF PROPERTY IS IN A TOWNSHIP**, NOTE THE ATLAS PAGE NUMBER. TURN TO THE PAGE INDICATED AND LOCATE SPECIFIC PARCEL OF INTEREST.
NOTE: ON SOME MAPS YOU MAY BE REFERRED TO A DETAIL SHEET SHOWING AN ENLARGEMENT OF THE AREA. THESE MAPS ARE FOUND AT THE END OF THE REGULAR MAP PAGES IN EACH TOWNSHIP EITHER IN ALPHABETICAL OR NUMERICAL SEQUENCE.
- B. IF PROPERTY IS IN A MUNICIPALITY**, REFER TO THE TABLE OF CONTENTS, ATLAS PAGE 'C', AND NOTE THE BEGINNING ATLAS PAGE NUMBER FOR THE MUNICIPALITY OF INTEREST.
 - (1) TURN TO THE PAGE INDICATED. ON THIS PAGE WILL APPEAR AN INDEX MAP FOR THAT MUNICIPALITY.
 - (2) LOCATE SPECIFIC AREA OF INTEREST AND NOTE THE MAP PAGE NUMBER.
NOTE: DO NOT CONFUSE THE MAP PAGE NUMBER WITH THE ATLAS PAGE NUMBER IN THESE MUNICIPALITIES.
 - (3) FOLLOW EITHER ALPHABETICAL OR NUMERICAL SEQUENCE TO THE MAP PAGE INDICATED AND LOCATE SPECIFIC PARCEL OF INTEREST.